

By: Mike Hill, Cabinet Member for Communities Directorate
Amanda Honey, Managing Director for Communities Directorate

To: Children, Families and Education Policy Overview Committee, 27th March 2009

Subject: Integrated Youth Support Strategy

Classification: Unrestricted

Summary: This report summarises the content and progress of the Integrated Youth Support Strategy and accompanying Implementation Plan (Appendix 1). The strategy and implementation plan are subject to formal consultation through the Kent Children's Trust Partnership. Both documents are appended to this report.

1. Introduction

- 1.1 The concept of Integrated Youth Support Services (IYSS) originated with the Youth Matters green paper in 2005. IYSS is about providing access to services for all young people according to their needs.
- 1.2 The Youth Matters green paper proposed four key elements deemed crucial in improving outcomes for young people:
 - **Positive activities:** more things to do and places to go
 - **Making a contribution:** More opportunities to contribute to their local community through personal development opportunities such as volunteering.
 - **Information, Advice and Guidance:** better quality and appropriately delivered.
 - **Reformed targeted youth support:** better support when needed to deal with specific problems.

2. Process

- 2.1 The draft Integrated Youth Support Strategy was considered and approved by the Kent Children's Trust Board on January 31st 2008. A copy is included at Appendix 2.
- 2.2 Communities Policy Overview Committee commented on an early draft of the strategy in November 2007. Comments were also received from Children, Families and Education POC at that time.

- 2.3 Subsequently, further work has been done to produce the draft implementation plan. This work has been done a multi-agency working group, chaired by the Director of Youth Services and KDAAT (KCC Communities Directorate).
- 2.4 The Kent Children's Trust Board has agreed that the strategy and implementation plan should be consulted on together. The consultation period commenced on March 12th 2009 and will run for three months until the end of June 2009. This will ensure that all partners have time to respond in accordance with the Kent Partners' Compact. It will include a series of consultation events with young people and will include work with those young people for whom there exist significant barriers to access.
- 2.5 The implementation plan is essentially a detailed action plan accompanied by a discussion of the structural, governance and resourcing arrangements for taking this work forward. Within the Kent Children's Trust structure this work will be taken forward by a dedicated, multi-agency board, chaired by Angela Slaven.

3. Recommendations

Members are asked to:

- (i) NOTE the development of the Integrated Youth Support Strategy and Implementation Plan
- (ii) COMMENT on the strategy and implementation plan.

Angela Slaven, Director of Youth Services and KDAAT, Communities Directorate
01622 221696
Angela.Slaven@kent.gov.uk

Contact officer:
Judy Doherty, Policy Manager, Communities Directorate
01622 221327
Judy.doherty@kent.gov.uk

Background Documents: *Integrated Youth Support Strategy (attached at Appendix 2)*

Other useful information: *None*

Appendix I

Implementing the Integrated Youth Support Strategy

1. Introduction

1.1 The Integrated Youth Support Strategy identifies where we want to be in Kent in our commitment to young people. This paper takes forward the policy priorities identified in the strategy.

2. Assumptions:

2.1 This plan assumes that:

- Integrated youth support in Kent will not be delivered through a new integrated youth support service. Rather, we will concentrate on integrating planning and commissioning processes, performance management, and referral pathways.
- There will be a sub-group of the Kent Children's Trust Board which owns and manages the outcome framework and performance management of the strategy.
- The focus of delivery will be local and that Local Children's Services Partnerships will be key agents.
- The plan is based on an assumption that there will be no new money or resources to support delivery. Delivery will focus on the improved outcomes that can be delivered from integrated planning and commissioning. It is expected that integrated working at local level will also reduce duplication and promote new ways of working which will release existing resources to be used differently.

3. Structure, Governance and Accountability

3.1 The integrated youth support strategy is located within the overall framework of the Kent Children's Trust arrangements. A highly strategic but broadly constituted Kent Children's Trust Board (KCTB) oversees the development of the county Children and Young People's Plan (CYPP). At the local level 23 Local Children's Services Partnerships have been formed as the key delivery agents of the CYPP priorities. A range of working groups at county level completes the sub-structure of the KCTB. These sub-groups will lead on the design, planning and commissioning of priority services for children and young people; acting as technical advisors to the Local Children's Services Partnerships (LCSPs) where a local component to commissioning is agreed.

Appendix 1(a) shows the current structure and sub-structure of the KCTB

3.2 Oversight of the integrated youth support strategy will be the responsibility of a Kent Children's Trust core sub-group. This is currently represented on the KCT sub-structure as the IYSS/TYS group. Over a period of 12 months, IYSS/TYS group will merge with the existing 14-19 Strategic Forum. This will ensure that the planning and commissioning agenda for young people is integrated and that there is a collaborative approach to delivering better outcomes for young people.

3.3 Nationally, government expectation is that Integrated Youth Support Strategies will deliver the outcomes of National Public Service Agreement 14: Increase the number of young people on the path to success.

3.4 PSA 14 aims to tackle a range of poor outcomes for young people where research suggests that there is some commonality of risk factors. Targeted youth support is critical to this and the TYS operational group will report to the IYSS/TYS sub-group.

3.5 A key element of delivering integrated youth support services is the activities, events and interventions delivered at a local level and overseen by district and borough councils through the youth strategies. District and borough councils collectively lead on the CYPP priority to "Ensure there is equality of access to recreational activities, in particular in areas of deprivation or for those with few economic resources" (CYPP 1B/4). This is not a relationship of accountability but ensuring strong and purposeful relationships between the tiers of local government will be an important task for the IYSS/TYS group.

4. Resources

The Integrated Youth Support Strategy (IYSS) represents the co-ordination and delivery of services to young people across the county of Kent from a range of sectors and organisations. This strategy builds upon existing arrangements, opportunities and facilities for young people and the investment is in principle within existing structures and resources and does not identify any immediate funding gaps.

The Kent Youth Service delivers one aspect of a universal youth service provision to young people in Kent aged 13 – 19 years. IYSS is however much broader than this universal offer and as a strategy it sets out and highlights key aspects of the delivery of children and young people's services including; information, advice and guidance (IAG), targeted support and positive activities for young people. The range of services and funding sources is significant involving funding from the County Council, district councils, the voluntary sector and private sector. In addition, many partner organisations and agencies, including the PCT's in Kent and Kent Police invest in services for young people.

The youth service provision is set to increase in the next few years with a commitment from central government towards Positive Activities for Young People (PAYP) programme to increase in the next 3 years.

Information, Advice and Guidance covers a many aspects of young people's lives. The Connexions service is commissioned to provide IAG with specific regard to Education, Training and Employment. In addition services to young people within schemes such as "House", Teenage Pregnancy and Young People's KDAAT amount to a significant additional investment.

In future years the investment in youth services' provision and support will, and should, grow in recognition that the modernisation of some aspects of service needs to be undertaken and a recognition that provision is no longer "fit for purpose". All the indicators suggest that investment in young people services leads to young people contributing and participating in a constructive lifestyle and one that leads to benefits both for themselves and their community.

The successful implementation of the strategy requires quantitative and qualitative evaluation of service provision and a correlation with the Children and Young People's Plan and outcome measures. Investment and development should follow this assessment and analysis and delivery will continue to be across a range of settings. The strategy aims to work with young people and to support investment in services that reflect both the universal need and when and if required more targeted investment.

This section is left blank

5. Terms of Reference and Membership of the IYSS/TYS group

The Board is a multi-agency, cross sector sub-group of and accountable to the Kent Children's Trust Board.

The Board will exist for 12 months during which period its agenda and terms of reference will be merged with that of the 14-19 strategic forum.

The Board will oversee the implementation of the Integrated Youth Support Strategy in Kent, working across the KCTB structures to ensure that all required elements of IYSS are implemented.

The Board will report to the Safer and Stronger Communities sub-group of the Kent Partnership on those aspects of its work that contribute to public safety and community cohesion.

The Board will be strategically aligned with PSA 14 to promote better outcomes for young people across the ECM outcomes framework.

The Board will work with young people in accordance with the KCTB participation strategy to ensure that their views sought and acted upon.

Responsibilities:

- (i) To assess need and develop strategies to ensure equality of access and improved outcomes for young people.
- (ii) To work collaboratively with district and borough councils to monitor and improve coverage, quality and accessibility of community based services for young people in Kent.
- (iii) To ensure the active participation of young people in planning, commissioning, service design and evaluation.
- (iv) To act as a commissioning reference group for the commissioner for IAG, PAYP and TYS and to other commissioners of services and projects for young people.
- (v) To champion the needs of vulnerable young people and develop strategies to "narrow the gap".
- (vi) To oversee the targets and indicators outlined in the performance framework and act as agent for the KCTB Performance Management group in driving improvement;
- (vii) To link with the Children and Young People's Health Board, the 8-13 group, and the County Youth Justice Board to identify shared tactical approaches in preventative work;
- (viii) To act as technical advisor to LCSP's in planning, commissioning and delivering local services for young people, particularly where the services are targeted and preventative;
- (ix) To develop and keep under review a communications strategy which will promote the positive contribution made by young

people in Kent and help young people to speak and act for themselves.

- (x) Promote and develop a more integrated young people’s work force

6. Monitoring and Performance Management

5.1 A proposed performance monitoring framework is attached at *appendix 2*. The performance framework is based on high level outcome indicators related to PSA14 and cross referenced with Kent’s Local Area Agreement and Children and Young People’s Plan.

5.2 High level indicators are useful at population level. The performance monitoring framework is supplemented by young people’s feedback measures (sources to be identified but include NFER and Tell Us data) and quality and equality measures. Equality measures tell us how we are providing opportunities and services to young people who are vulnerable to exclusion. This includes young people with disabilities, young carers, young migrants, young people from ethnic minority groups, young people in or leaving care and lesbian, gay, bisexual young people.

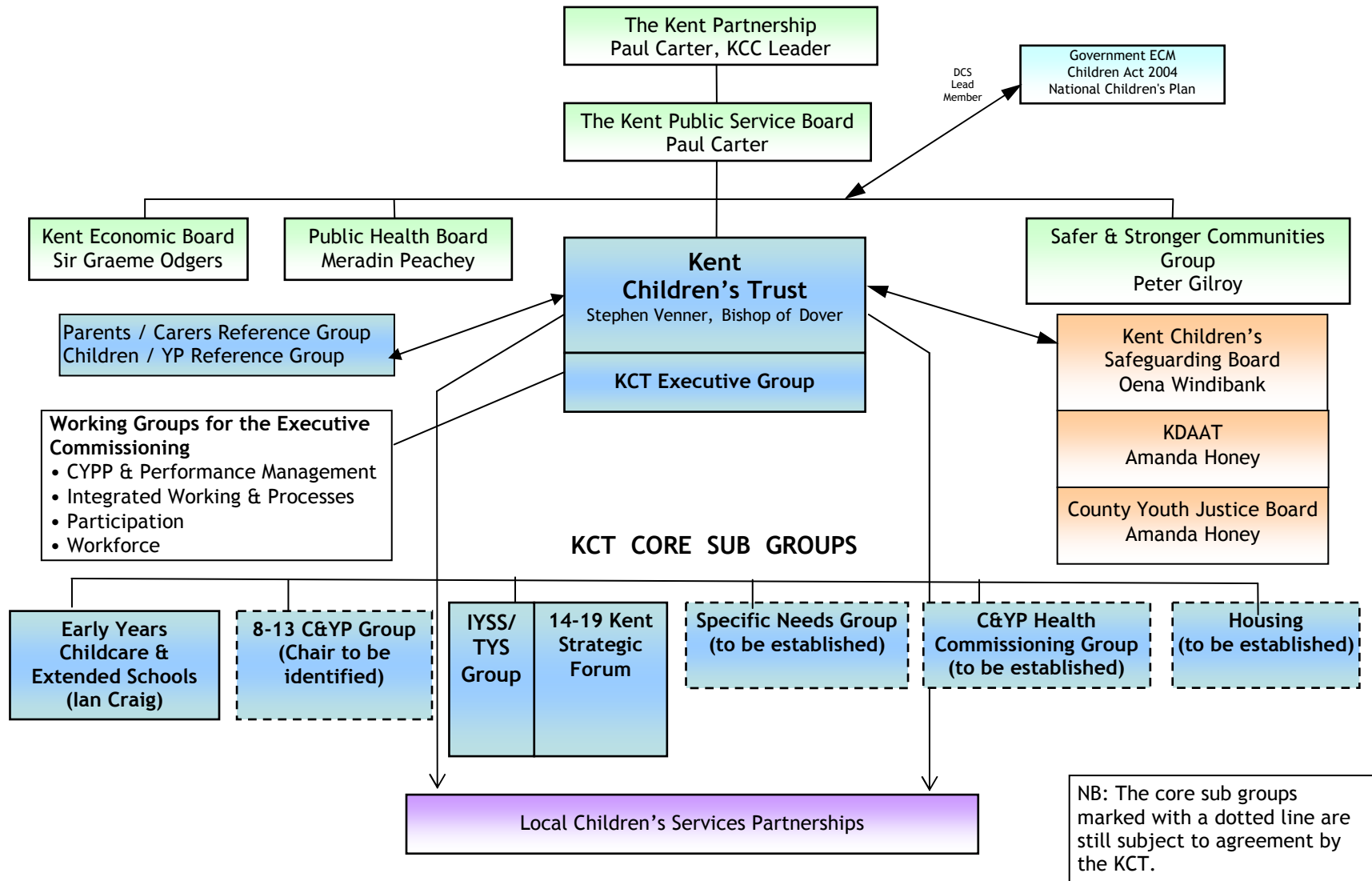
7. Action Plan

Action	Lead	Time scale
1.Establishing the KCT sub-group		
1.1 Obtain approval for the Board Terms of Reference and proposed membership at KCTB 1.2 Establish Board 1.3 Communicate Board Terms of Reference to LCSPs 1.4 Ensure that there is clarity for all partners about where the strategic leads for service elements of the IYSS are placed. 1.5 Agree process for involving young people at all stages 1.6 Agree process for merger with 14-19 strategic board	Angela Slaven	March 2009
2. Agreeing the strategy		
2.1 Manage the consultation on the IYSS strategy in accordance with the Kent Partners Compact	Angela Slaven	June 2009
2.2 Ensure that young people’s views are sought and heard during the consultation period.	Service heads	June 2009
3. Assessing needs and gaps		
3.1 Work with LCSPs, district and boroughs and KCT data group on needs analysis	IYSS Board and KCT	Work has commenced

<p>model.</p> <p>3.2 Develop a methodology for on-going gap analysis</p> <p>3.3 Develop a deeper understanding of the barriers to access</p>	<p>commissioning group</p>	
<p>4. Service Standards</p> <p>4.1 Implement quality standards for in-house youth provision (Aiming High for Young People)</p> <p>4.2 Include standards within the commissioning specification for youth provision</p> <p>4.3 Investigate models for volunteering standards for youth volunteering</p>	<p>Nigel Baker</p>	<p>On-going</p>
<p>5. PAYP</p> <p>5.1 Monitor the effectiveness of PAYP funded positive activities against service specification and outcomes</p> <p>5.2 Agree referral routes to PAYP for young people released from custody</p> <p>5.3 Implement approved actions from the Select Committee into positive activities</p>	<p>Helen Jones</p>	
<p>6. Targeted Youth Support</p> <p>6.1 Support the roll-out of TYS</p> <p>6.2 Develop processes for early identification of vulnerable young people</p> <p>6.3 Ensure young people are able to access early support in universal settings.</p> <p>6.4 Develop protocols for supporting young people across transitions</p>	<p>With TYS operational group</p>	
<p>7. Making a Positive Contribution</p> <p>7.1 Ensure opportunities for youth volunteering are available on Togogo and the Resource Directory</p> <p>7.2 Link young people's contribution to work on community cohesion</p> <p>7.3 Develop a media communications strategy to highlight the achievements of young people</p>	<p>IYSS Board</p>	
<p>8. Equality and access</p> <p>8.1 Work with partners to ensure that integrated youth support services are developed in a way that excludes no young people. With particular reference to: Looked after young people; Young Carers; Young migrants Young people from BME groups Young people with disabilities Lesbian, gay and bisexual young people</p>	<p>IYSS Board</p>	

<p>9 Advocacy for young people 9.1 Build relationships and networks with services and organisations so that members of the board can act as advocates for young people and can respond to policy challenges and developments 9.2 Keep KCT informed of emerging policy areas</p>	<p>IYSS Board</p>	
<p>10. Workforce development 10.1 Engage with the KCT Executive Workforce group to ensure that the needs of the young people’s workforce are met 10.2 Ensure that staff and volunteers in the young people’s workforce are able to access appropriate training and development opportunities</p>	<p>IYSS Board and KCT Workforce group</p>	
<p>11. Involvement and Participation of young people 11.1 Develop a model of involvement and participation of young people in all aspects of the Integrated Youth Support Strategy</p>	<p>IYSS Board, LCSPs and District and Borough Councils</p>	
<p>12. Monitoring Outcomes 12.1 Agree monitoring framework (see appendix 1b) 12.2 Work with KCT performance monitoring group to agree data and metrics for measuring outcomes 12.3 Use feedback from young people as part of the monitoring framework 12.4 Work with 14-19 Strategic Board to agree joint monitoring framework</p>	<p>IYSS Board</p>	

Appendix 1(a)



Appendix 1 (b)

IYSS Performance Framework

High level indicators PSA14	% 16-18 NEET	Participation in Positive Activities	% young people frequently using illicit drugs, alcohol or volatile substances	Under-18 conception rate	First time entrants YJS 10-17	Outcomes
National Indicators included in Kent LAA		NI 110 Young people's participation in positive activities			NI 111 First time entrants to the Youth Justice System	
CYPP priorities	7d 66 Provide impartial, up-to-date and personalised IAG for all young people and ensure their parents or carers have access to support their child's decision making: input	6a 48 Ensure that young people have safe places to meet and things to do that they want to do. input 6a 51 Support, encourage and promote opportunities for children and young people to engage in volunteering output	8b 71 Reduce alcohol and drug related anti-social behaviour involving young people outcome	2b 13 Ensure young people have access to high quality sex and relationships education and to confidential services delivered by trained professionals input	6b 53 Extend existing youth offending prevention and diversion schemes in targeted neighbourhoods to increase engagement with young people at risk of offending input	
CYPP Metrics	To be determined: Action plans to be agreed at KCTB December 2008					
Feedback from young people						
Quality and equality measures						